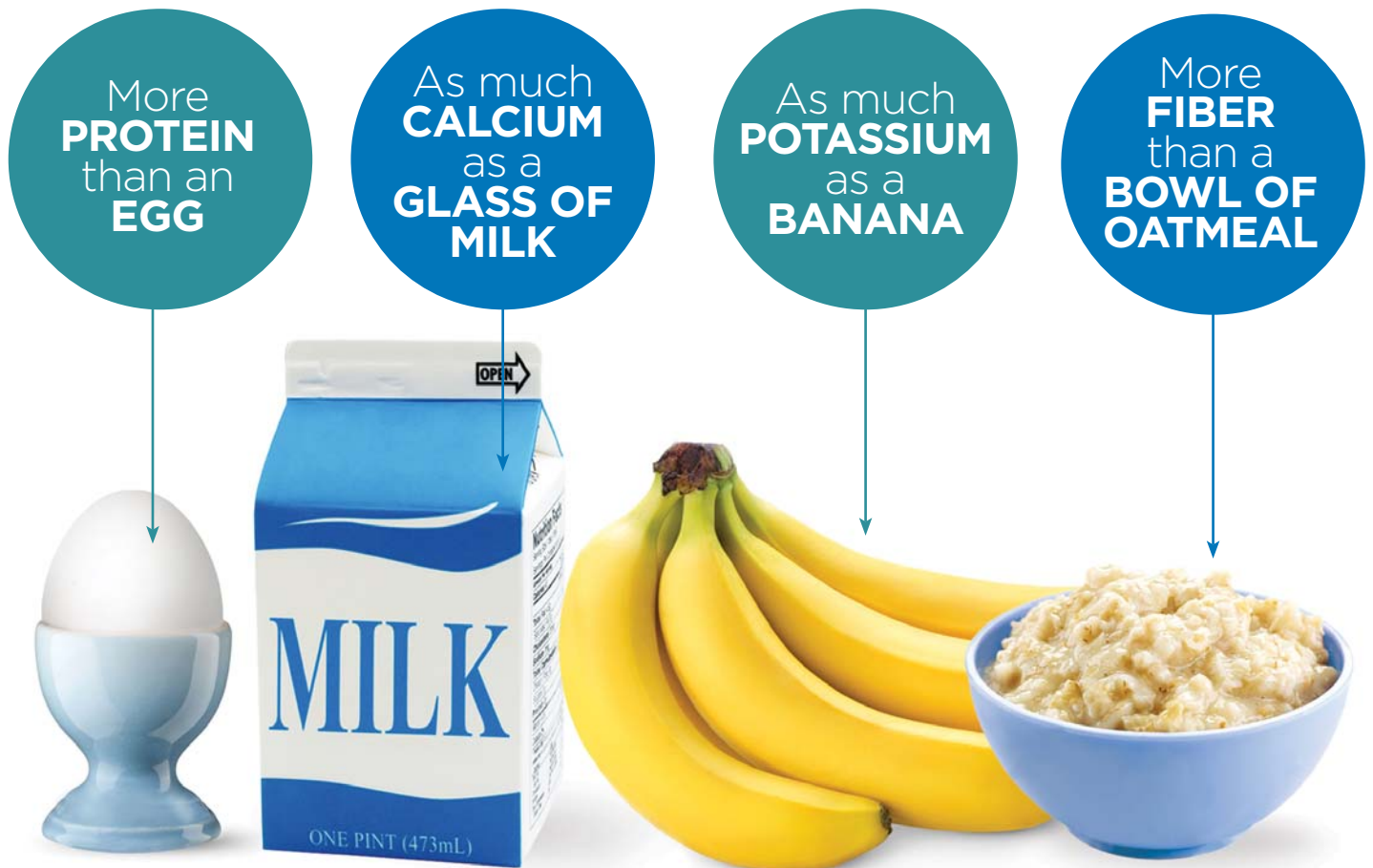


THRIVE[®]

real ice cream. real benefits.

Now you can serve complete, delicious nutrition in an ice cream format.

Thrive Ice Cream helps solve the nutritional challenges faced by hospitals, senior living and rehabilitation facilities, addressing issues such as adult malnutrition, poor appetite, low energy, swallowing disorders, and other special needs. Thrive's patented active probiotics support digestive and immune health. Best of all, Thrive's delicious flavor brings enjoyment to every bite!



Nutrition-packed Thrive Ice Cream in ready-to-serve cups is available in four delicious flavors: Creamy Vanilla, Simply Chocolate, Fresh Strawberry, and No Sugar Added Creamy Vanilla.



ThriveforHealthcare.com

855.376.9367

Info@ThriveforHealthcare.com





Nutrition Facts	
1 servings per container	
Serving size	6 Floz (135g)
Amount per serving	
Calories	270
% Daily Value*	
Total Fat 13g	17%
Saturated Fat 8g	40%
Trans Fat 0g	
Cholesterol 45mg	15%
Sodium 90mg	4%
Total Carbohydrate 33g	12%
Dietary Fiber 6g	21%
Soluble Fiber 6g	
Total Sugars 26g	
Includes 22g Added Sugars	45%
Protein 9g	
Vitamin D 8mcg	40%
Calcium 441mg	35%
Iron 5mg	30%
Potassium 551mg	10%
Vitamin A 358mcg	40%
Vitamin C 45mg	50%
Vit E 4mg	25%
Vitamin K 20mcg	15%
Thiamin 0.2mg	15%
Riboflavin 0.3mg	25%
Niacin 3mg	20%
Vitamin B ₆ 0.3mg	20%
Folate 107mcg DFE	25%
Vitamin B ₁₂ 0.6mcg	25%
Biotin 6mcg	20%
Pantothenic Acid 1mg	20%
Phosphorus 446mg	35%
Iodine 42mcg	30%
Magnesium 98mg	25%
Zinc 2mg	20%
Selenium 10mcg	20%
Copper 0.2mg	20%
Manganese 0.5mg	20%
Chromium 14mcg	40%
Molybdenum 9mcg	20%

*The % Daily Value tells you how much a nutrient in a serving of food contributes to a daily diet. 2,000 calories a day is used for general nutrition advice.

Nutrition Facts	
1 servings per container	
Serving size	6 Floz (135g)
Amount per serving	
Calories	270
% Daily Value*	
Total Fat 13g	17%
Saturated Fat 8g	40%
Trans Fat 0g	
Cholesterol 45mg	15%
Sodium 90mg	4%
Total Carbohydrate 32g	12%
Dietary Fiber 6g	21%
Soluble Fiber 6g	
Total Sugars 25g	
Includes 22g Added Sugars	45%
Protein 9g	
Vitamin D 7mcg	35%
Calcium 456mg	35%
Iron 4mg	20%
Potassium 434mg	10%
Vitamin A 350mcg	40%
Vitamin C 45mg	50%
Vit E 4mg	25%
Vitamin K 19mcg	15%
Thiamin 0.2mg	15%
Riboflavin 0.3mg	25%
Niacin 3mg	20%
Vitamin B ₆ 0.3mg	20%
Folate 106mcg DFE	25%
Vitamin B ₁₂ 0.6mcg	25%
Biotin 6mcg	20%
Pantothenic Acid 1mg	20%
Phosphorus 432mg	35%
Iodine 42mcg	30%
Magnesium 98mg	25%
Zinc 2mg	20%
Selenium 10mcg	20%
Copper 0.2mg	20%
Manganese 0.4mg	15%
Chromium 7mcg	20%
Molybdenum 9mcg	20%

*The % Daily Value tells you how much a nutrient in a serving of food contributes to a daily diet. 2,000 calories a day is used for general nutrition advice.

Nutrition Facts	
1 servings per container	
Serving size	6 Floz (135g)
Amount per serving	
Calories	270
% Daily Value*	
Total Fat 12g	15%
Saturated Fat 8g	40%
Trans Fat 0g	
Cholesterol 45mg	15%
Sodium 85mg	4%
Total Carbohydrate 33g	12%
Dietary Fiber 6g	21%
Soluble Fiber 6g	
Total Sugars 26g	
Includes 21g Added Sugars	40%
Protein 9g	
Vitamin D 7mcg	35%
Calcium 437mg	35%
Iron 4mg	20%
Potassium 452mg	10%
Vitamin A 336mcg	35%
Vitamin C 45mg	50%
Vit E 4mg	25%
Vitamin K 22mcg	20%
Thiamin 0.2mg	15%
Riboflavin 0.3mg	25%
Niacin 3mg	20%
Vitamin B ₆ 0.3mg	20%
Folate 102mcg DFE	25%
Vitamin B ₁₂ 0.6mcg	25%
Biotin 5mcg	15%
Pantothenic Acid 1mg	20%
Phosphorus 414mg	35%
Iodine 40mcg	25%
Magnesium 94mg	20%
Zinc 2mg	20%
Selenium 10mcg	20%
Copper 0.2mg	20%
Manganese 0.4mg	15%
Chromium 6mcg	15%
Molybdenum 8mcg	20%

*The % Daily Value tells you how much a nutrient in a serving of food contributes to a daily diet. 2,000 calories a day is used for general nutrition advice.

Nutrition Facts	
1 servings per container	
Serving size	6floc (128g)
Amount per serving	
Calories	220
% Daily Value*	
Total Fat 12g	15%
Saturated Fat 7g	35%
Trans Fat 0g	
Cholesterol 45mg	15%
Sodium 110mg	5%
Total Carbohydrate 27g	10%
Dietary Fiber 0g	0%
Total Sugars 5g	
Includes 0g Added Sugars	0%
Sugar Alcohol 15g	
Protein 10g	
Vitamin D 6mcg	30%
Calcium 408mg	30%
Iron 4mg	20%
Potassium 413mg	8%
Vitamin K 17mcg	15%
Thiamin 0.3mg	25%
Riboflavin 0.4mg	30%
Vitamin B ₆ 0.4mg	25%
Vitamin B ₁₂ 1.3mcg	50%
Biotin 5mcg	15%
Pantothenic Acid 2mg	40%
Phosphorus 256mg	20%
Iodine 38mcg	25%
Magnesium 102mg	25%
Zinc 4mg	35%
Selenium 15mcg	25%
Copper 0.4mg	45%
Manganese 0.4mg	15%
Chromium 31mcg	90%
Molybdenum 15mcg	35%

*The % Daily Value tells you how much a nutrient in a serving of food contributes to a daily diet. 2,000 calories a day is used for general nutrition advice.

Calories per gram:
Fat 9 • Carbohydrate 4 • Protein 4

INGREDIENTS: Milk, Cream, Sugar, Water, Milk Proteins, Soluble Corn Fiber, Dextrose, Cocoa (processed with Alkali), Thrive Proprietary Vit/Min blend (Dimagnesium Phosphate, Tricalcium Phosphate, Dipotassium Phosphate, Potassium Chloride, d-1 alpha Tocopheryl Acetate, Ferric Orthophosphate, Potassium Iodide, Vitamin A Palmitate, Vitamin D3, Niacinamide, Zinc Oxide, Vitamin K-1, Manganese Sulfate, Sodium Selenite, D-Calcium Pantothenate, Sodium Molybdate, Chromium Chloride, Folic Acid, Biotin, Pyridoxine Hydrochloride, Thiamin Mononitrate, Riboflavin, Cupric Oxide, Cyanocobalamin), Natural and Artificial flavors, Natural Stabilizer Blend (Tamarind Seed Gum, Cellulose Fiber), Salt, Ascorbic Acid, Bacillus coagulans - GBI-30 - 6086, Bifidobacterium, L. acidophilus, L. paracasei.

Contains: Milk, Egg

INGREDIENTS: Milk, Cream, Sugar, Water, Milk Proteins, Soluble Corn Fiber, Dextrose, Thrive Proprietary Vit/Min blend (Dimagnesium Phosphate, Tricalcium Phosphate, Dipotassium Phosphate, Potassium Chloride, d-1 alpha Tocopheryl Acetate, Ferric Orthophosphate, Potassium Iodide, Vitamin A Palmitate, Vitamin D3, Niacinamide, Zinc Oxide, Vitamin K-1, Manganese Sulfate, Sodium Selenite, D-Calcium Pantothenate, Sodium Molybdate, Chromium Chloride, Folic Acid, Biotin, Pyridoxine Hydrochloride, Thiamin Mononitrate, Riboflavin, Cupric Oxide, Cyanocobalamin), Natural and Artificial Vanilla Flavor, Natural Stabilizer Blend (Tamarind Seed Gum, Cellulose Fiber), Salt, Ascorbic Acid, Bacillus coagulans - GBI-30 - 6086, Bifidobacterium, L. acidophilus, L. paracasei, Annatto extract (color).

Contains: Milk, Egg

INGREDIENTS: Milk, Cream, Sugar, Water, Milk Proteins, Oligosaccharose (fiber), Strawberries and Strawberry Juice, Dextrose, Thrive Proprietary Vit/Min blend (Dimagnesium Phosphate, Tricalcium Phosphate, Dipotassium Phosphate, Potassium Chloride, d-1 alpha Tocopheryl Acetate, Ferric Orthophosphate, Potassium Iodide, Vitamin A Palmitate, Vitamin D3, Niacinamide, Zinc Oxide, Vitamin K-1, Manganese Sulfate, Sodium Selenite, D-Calcium Pantothenate, Sodium Molybdate, Chromium Chloride, Folic Acid, Biotin, Pyridoxine Hydrochloride, Thiamin Mononitrate, Riboflavin, Cupric Oxide, Cyanocobalamin), Natural Flavors, Natural Stabilizer Blend (Guar Gum, Locust Bean Gum), Salt, Ascorbic Acid, Bacillus coagulans - GBI-30 - 6086, Bifidobacterium, L. acidophilus, L. paracasei, Red Beet Extract and Purple Carrot Concentrate (color).

Contains: Milk, Egg

INGREDIENTS: Milk, Cream, Maltitol*, Water, Milk Proteins, Inulin (Fiber), Polydextrose, Nonfat Dry Milk, Vitamins & Minerals (Dimagnesium Phosphate, Tricalcium Phosphate, Potassium Chloride, Dipotassium Phosphate, Ferric Orthophosphate, d-1 alpha Tocopheryl Acetate, Zinc Oxide, Niacinamide, D-Calcium Pantothenate, Manganese Sulfate, Vitamin A Palmitate, Thiamin Mononitrate, Pyridoxine Hydrochloride, Cupric Oxide, Riboflavin, Chromium Chloride, Biotin, Potassium Iodide, Sodium Molybdate, Sodium Selenite, Vitamin K-1, Folic Acid, Vitamin D3, Cyanocobalamin), Natural Flavor, Less than 1% of: Glycerol*, Stabilizer (Locust Bean Gum, Guar Gum), Salt, Ascorbic Acid (Vitamin C), Probiotic Cultures (Bacillus coagulans GBI-30 6086, Bifidobacterium, L. acidophilus, L. paracasei), Annatto Extract, Sucralose, Acesulfame Potassium, Egg

*Sensitive individuals may experience a laxative effect from excess consumption of sugar alcohols
Contains: Milk, Egg

The International Dysphagia Diet Standardization Initiative (IDDSI) has issued new guidelines. Thrive Ice Cream falls into the Level 2 **Mildly Thick (Nectar)** category per IDDSI guidelines.

JULY 16, 2018

Please contact us if not in stock at your food distributor.

