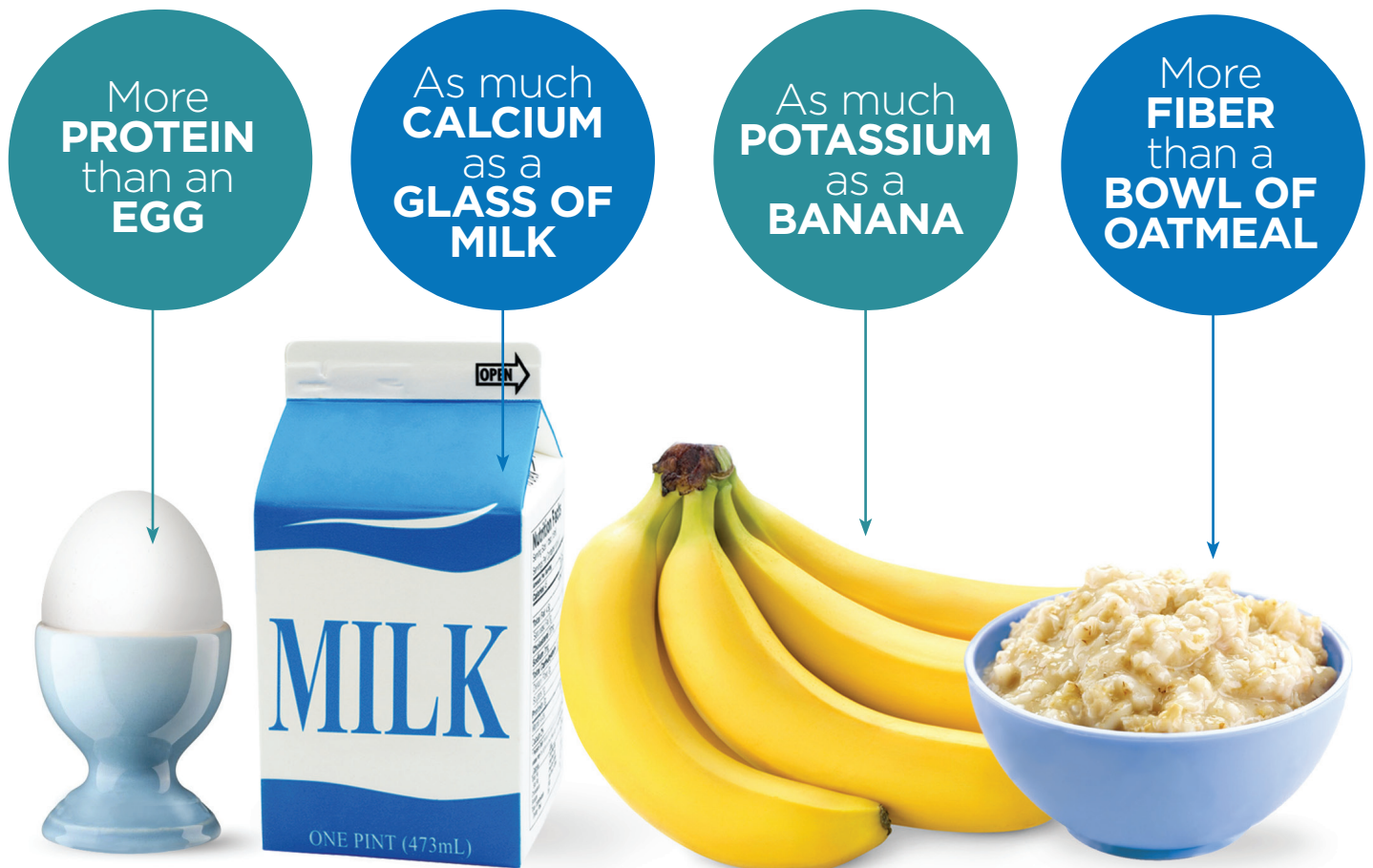


# THRIVE<sup>®</sup>

real ice cream. real benefits.

## Now you can serve complete, delicious nutrition in an ice cream format.

Thrive Ice Cream helps solve the nutritional challenges faced by hospitals, senior living and rehabilitation facilities, addressing issues such as adult malnutrition, poor appetite, low energy, swallowing disorders, and other special needs. Thrive's patented active probiotics support digestive and immune health. Best of all, Thrive's delicious flavor brings enjoyment to every bite!



Nutrition-packed Thrive Ice Cream in ready-to-serve cups is available in four delicious flavors: Creamy Vanilla, Simply Chocolate, Fresh Strawberry, and No Sugar Added Creamy Vanilla.





## Nutrition Facts

1 servings per container  
Serving size 6 Floz (135g)

Amount per serving  
**Calories 270**

% Daily Value\*

Total Fat 13g	17%
Saturated Fat 8g	40%
Trans Fat 0g	
Cholesterol 45mg	15%
Sodium 90mg	4%
Total Carbohydrate 33g	12%
Dietary Fiber 6g	21%
Soluble Fiber 6g	
Total Sugars 25g	
Includes 22g Added Sugars	44%

Protein 9g

Vitamin D 8mcg	40%
Calcium 440mg	35%
Iron 5mg	30%
Potassium 550mg	10%
Vitamin A 358mcg	40%
Vitamin C 45mg	50%
Vit. E 4mg	25%
Vitamin K 20mcg	15%
Thiamin 0.2mg	15%
Riboflavin 0.3mg	25%
Niacin 3mg	20%
Vitamin B <sub>6</sub> 0.3mg	20%
Folate 107mcg DFE	25%
Vitamin B <sub>12</sub> 0.6mcg	25%
Biotin 6mcg	20%
Pantothenic Acid 1mg	20%
Phosphorus 446mg	35%
Iodine 42mcg	30%
Magnesium 98mg	25%
Zinc 2mg	20%
Selenium 10mcg	20%
Copper 0.2mg	20%
Manganese 0.5mg	20%
Chromium 14mcg	40%
Molybdenum 9mcg	20%

\*The % Daily Value tells you how much a nutrient in a serving of food contributes to a daily diet. 2,000 calories a day is used for general nutrition advice.

## Nutrition Facts

1 servings per container  
Serving size 6 Floz (135g)

Amount per serving  
**Calories 270**

% Daily Value\*

Total Fat 13g	17%
Saturated Fat 9g	45%
Trans Fat 0g	
Cholesterol 50mg	17%
Sodium 90mg	4%
Total Carbohydrate 32g	12%
Dietary Fiber 6g	21%
Soluble Fiber 6g	
Total Sugars 25g	
Includes 21g Added Sugars	42%

Protein 9g

Vitamin D 7mcg	35%
Calcium 449mg	35%
Iron 4mg	20%
Potassium 429mg	10%
Vitamin A 354mcg	40%
Vitamin C 45mg	50%
Vit. E 4mg	25%
Vitamin K 19mcg	15%
Thiamin 0.2mg	15%
Riboflavin 0.3mg	25%
Niacin 3mg	20%
Vitamin B <sub>6</sub> 0.3mg	20%
Folate 104mcg DFE	25%
Vitamin B <sub>12</sub> 0.6mcg	25%
Biotin 6mcg	20%
Pantothenic Acid 1mg	20%
Phosphorus 426mg	35%
Iodine 41mcg	25%
Magnesium 96mg	25%
Zinc 2mg	20%
Selenium 10mcg	20%
Copper 0.2mg	20%
Manganese 0.4mg	15%
Chromium 0mcg	0%
Molybdenum 9mcg	20%

\*The % Daily Value tells you how much a nutrient in a serving of food contributes to a daily diet. 2,000 calories a day is used for general nutrition advice.

## Nutrition Facts

1 servings per container  
Serving size 6 Floz (135g)

Amount per serving  
**Calories 270**

% Daily Value\*

Total Fat 13g	17%
Saturated Fat 8g	40%
Trans Fat 0g	
Cholesterol 45mg	15%
Sodium 85mg	4%
Total Carbohydrate 32g	12%
Dietary Fiber 6g	21%
Soluble Fiber 6g	
Total Sugars 25g	
Includes 20g Added Sugars	40%

Protein 9g

Vitamin D 7mcg	35%
Calcium 430mg	35%
Iron 4mg	20%
Potassium 446mg	10%
Vitamin A 339mcg	40%
Vitamin C 45mg	50%
Vit. E 4mg	25%
Vitamin K 21mcg	20%
Thiamin 0.2mg	15%
Riboflavin 0.3mg	25%
Niacin 3mg	20%
Vitamin B <sub>6</sub> 0.3mg	20%
Folate 100mcg DFE	25%
Vitamin B <sub>12</sub> 0.5mcg	20%
Biotin 5mcg	15%
Pantothenic Acid 1mg	20%
Phosphorus 408mg	35%
Iodine 40mcg	25%
Magnesium 92mg	20%
Zinc 2mg	20%
Selenium 10mcg	20%
Copper 0.2mg	20%
Manganese 0.4mg	15%
Chromium 0mcg	0%
Molybdenum 8mcg	20%

\*The % Daily Value tells you how much a nutrient in a serving of food contributes to a daily diet. 2,000 calories a day is used for general nutrition advice.

## Nutrition Facts

1 servings per container  
Serving size (135g)

Amount per serving  
**Calories 230**

% Daily Value\*

Total Fat 13g	17%
Saturated Fat 8g	40%
Trans Fat 0g	
Cholesterol 45mg	15%
Sodium 110mg	5%
Total Carbohydrate 28g	10%
Dietary Fiber 6g	21%
Total Sugars 5g	
Includes 0g Added Sugars	0%
Sugar Alcohol 16g	

Protein 9g

Vitamin D 8mcg	40%
Calcium 457mg	35%
Iron 4mg	20%
Potassium 478mg	10%
Vitamin A 357mcg	40%
Vitamin C 46mg	50%
Vitamin E 4mg	25%
Vitamin K 20mcg	15%
Thiamin 0.2mg	15%
Riboflavin 0.4mg	30%
Niacin 3mg	20%
Vitamin B <sub>6</sub> 0.3mg	20%
Folate 106mcg DFE	25%
Vitamin B <sub>12</sub> 0.4mcg	15%
Biotin 5mcg	15%
Pantothenic Acid 1mg	20%
Phosphorus 444mg	35%
Iodine 35mcg	25%
Magnesium 99mg	25%
Zinc 2mg	20%
Selenium 10mcg	20%
Copper 0.2mg	20%
Manganese 0.5mg	20%
Chromium 7mcg	20%
Molybdenum 9mcg	20%

\*The % Daily Value tells you how much a nutrient in a serving of food contributes to a daily diet. 2,000 calories a day is used for general nutrition advice.

INGREDIENTS: Milk, Cream, Sugar, Water, Milk Proteins, Soluble Corn Fiber, Dextrose, Cocoa(processed with Alkali), Thrive Proprietary Vit/Min blend-(Dimagnesium Phosphate, Tricalcium Phosphate, Dipotassium Phosphate, Potassium Chloride, d-1 alpha Tocopheryl Acetate, Ferric Orthophosphate, Potassium Iodide, Vitamin A Palmitate, Vitamin D3, Niacinamide, Zinc Oxide, Vitamin K-1, Manganese Sulfate, Sodium Selenite, D-Calcium Pantothenate, Sodium Molybdate, Chromium Chloride, Folic Acid, Biotin, Pyridoxine Hydrochloride, Thiamin Mononitrate, Riboflavin, Cupric Oxide, Cyanocobalamin), Natural and Artificial flavors, Stabilizer(Celulose Gel, Cellulose Gum), Salt, Ascorbic Acid, Bacillus coagulans - GBI-30 - 6086, Bifidobacterium, L. acidophilus, L. paracasei.

Contains: Milk, Egg

INGREDIENTS: Milk, Cream, Sugar, Water, Milk Proteins, Soluble Corn Fiber, Dextrose, Thrive Proprietary Vit/Min blend-(Dimagnesium Phosphate, Tricalcium Phosphate, Dipotassium Phosphate, Potassium Chloride, d-1 alpha Tocopheryl Acetate, Ferric Orthophosphate, Potassium Iodide, Vitamin A Palmitate, Vitamin D3, Niacinamide, Zinc Oxide, Vitamin K-1, Manganese Sulfate, Sodium Selenite, D-Calcium Pantothenate, Sodium Molybdate, Chromium Chloride, Folic Acid, Biotin, Pyridoxine Hydrochloride, Thiamin Mononitrate, Riboflavin, Cupric Oxide, Cyanocobalamin), Natural and Artificial Vanilla Flavor, Stabilizer(Celulose Gel, Cellulose Gum), Salt, Ascorbic Acid, Bacillus coagulans - GBI-30 - 6086, Bifidobacterium, L. acidophilus, L. paracasei, Annatto extract(color).

Contains: Milk, Egg

INGREDIENTS: Milk, Cream, Sugar, Water, Milk Proteins, Soluble Corn Fiber, Strawberries and Strawberry Juice, Dextrose, Thrive Proprietary Vit/Min blend-(Dimagnesium Phosphate, Tricalcium Phosphate, Dipotassium Phosphate, Potassium Chloride, d-1 alpha Tocopheryl Acetate, Ferric Orthophosphate, Potassium Iodide, Vitamin A Palmitate, Vitamin D3, Niacinamide, Zinc Oxide, Vitamin K-1, Manganese Sulfate, Sodium Selenite, D-Calcium Pantothenate, Sodium Molybdate, Chromium Chloride, Folic Acid, Biotin, Pyridoxine Hydrochloride, Thiamin Mononitrate, Riboflavin, Cupric Oxide, Cyanocobalamin), Natural Flavors, Stabilizer(Celulose Gel, Cellulose Gum), Salt, Ascorbic Acid, Bacillus coagulans - GBI-30 - 6086, Bifidobacterium, L. acidophilus, L. paracasei, Red Beet Extract and Purple Carrot Concentrate(color).

Contains: Milk, Egg

INGREDIENTS: Milk, Cream, Maltitol\*, Milk Proteins, Soluble Corn Fiber, Polydextrose, Thrive Proprietary Vit/Min Blend (Dimagnesium Phosphate, Tricalcium Phosphate, Dipotassium Phosphate, Potassium Chloride, d-1 alpha Tocopheryl Acetate, Ferric Orthophosphate, Potassium Iodide, Vitamin A Palmitate, Vitamin D3, Niacinamide, Zinc Oxide, Vitamin K-1, Manganese Sulfate, Sodium Selenite, D-Calcium Pantothenate, Sodium Molybdate, Chromium Chloride, Folic Acid, Biotin, Pyridoxine Hydrochloride, Thiamin Mononitrate, Riboflavin, Cupric Oxide, Cyanocobalamin), Glycerine, Stabilizer (Cellulose Gel, Cellulose Gum), Salt, Ascorbic Acid, Sucralose, Acesulfame-K, Annatto(color)

Contains: Milk, Egg

The International Dysphagia Diet Standardization Initiative (IDDSI) has issued new guidelines. Thrive Ice Cream falls into the Level 3 **Moderately Thick** category per IDDSI guidelines.

Jan. 12, 2024

Please contact us if not in stock at your food distributor.

